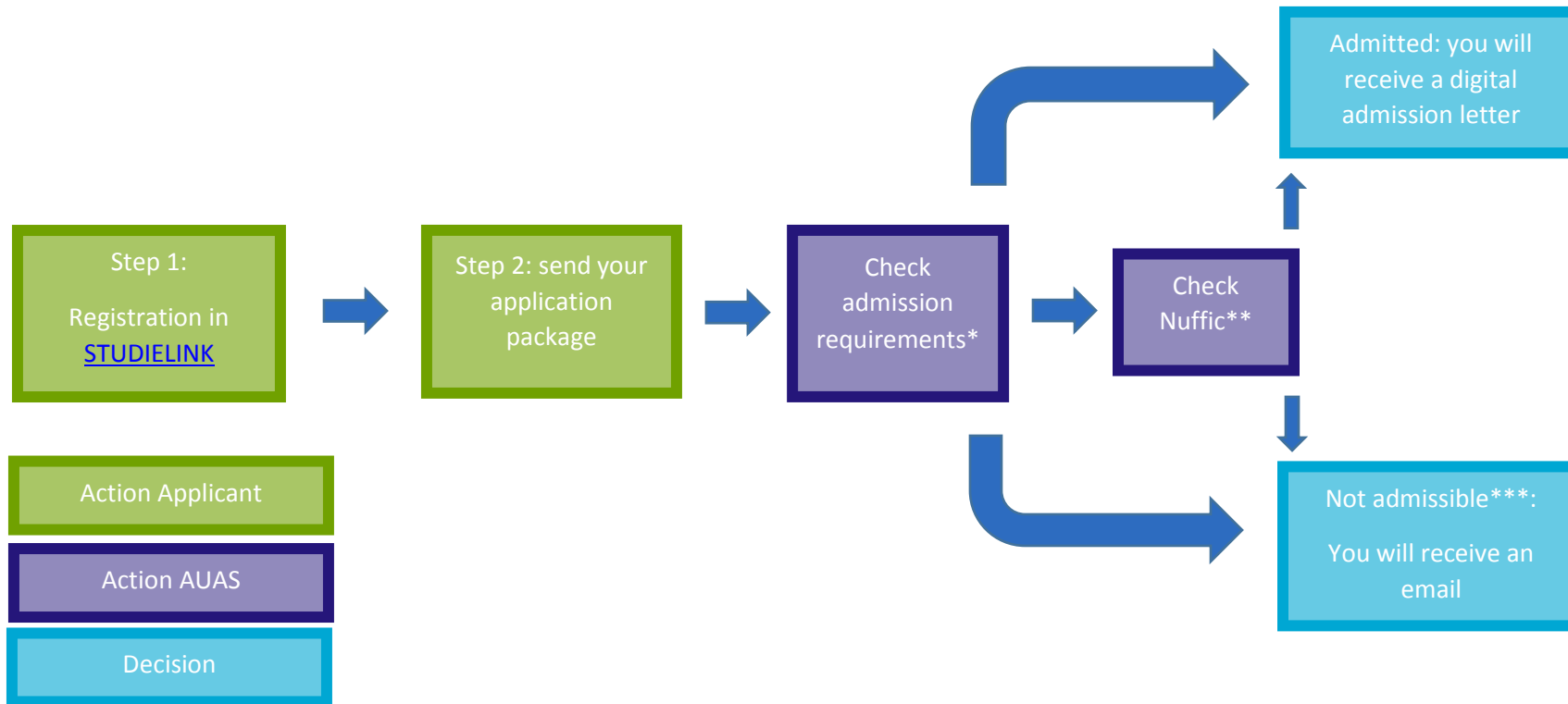


AUAS Admission and selection process International applicants Bachelor programmes



***Admission requirements:** AUAS will check if you meet the educational requirements. This includes your previous education as well as the language requirements. For more information please find the admission requirements on the AUAS website under your programme of choice.

Additional admission requirements: depending on the programme of your choice a Study Check might be a component of the enrolment procedure. Please contact the programme department. For programmes with a limited number of places you will be invited to take part in a selection procedure.

****Check Nuffic:** AUAS may send your file to Nuffic, the Dutch (NESO/ ENIC-NARIC) organisation for internationalization in education, for evaluation and advice regarding your previous/current education. According to AUAS policy Nuffic's advice is always leading in the decision making process.

***** Complaints and grievances?**

Not admissible: You have been informed by Central Student Offices (CSA) that you are not admissible and you do not agree? Please contact CSA and explain why you do not agree with this decision, CSA may provide more information.