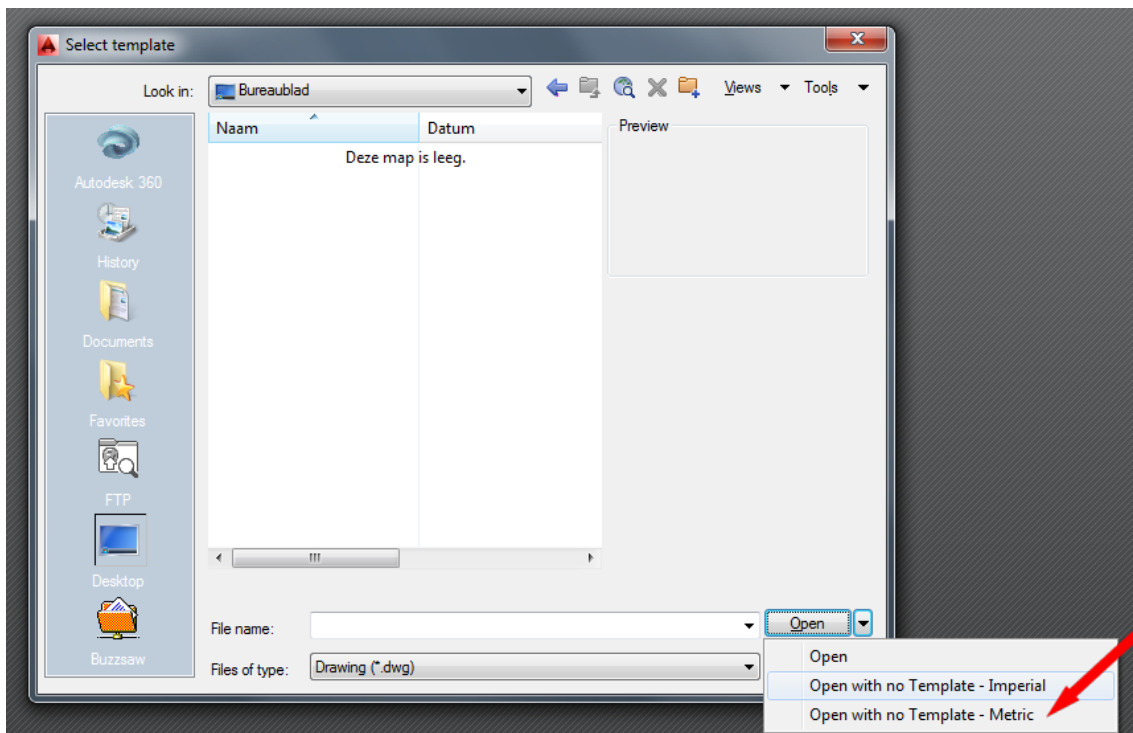
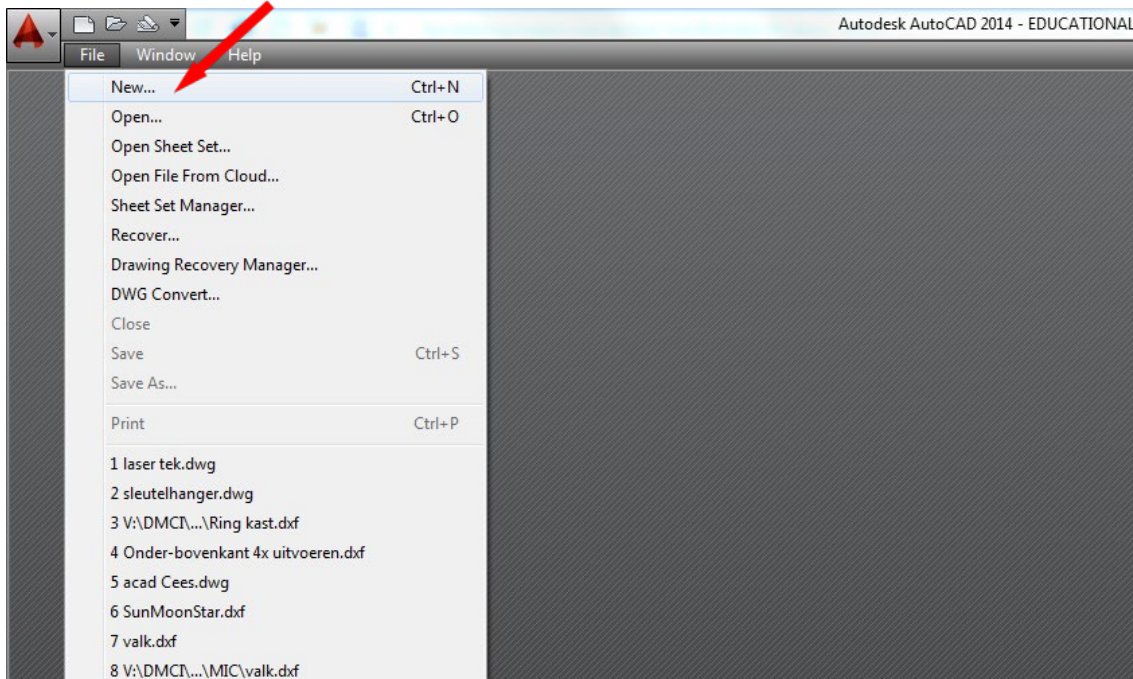
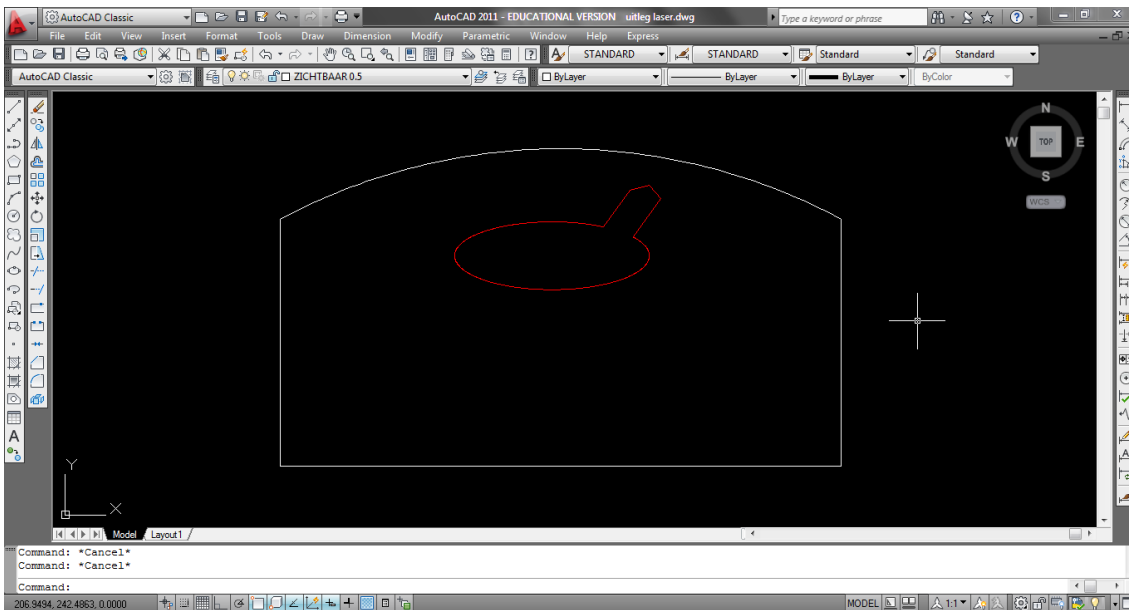


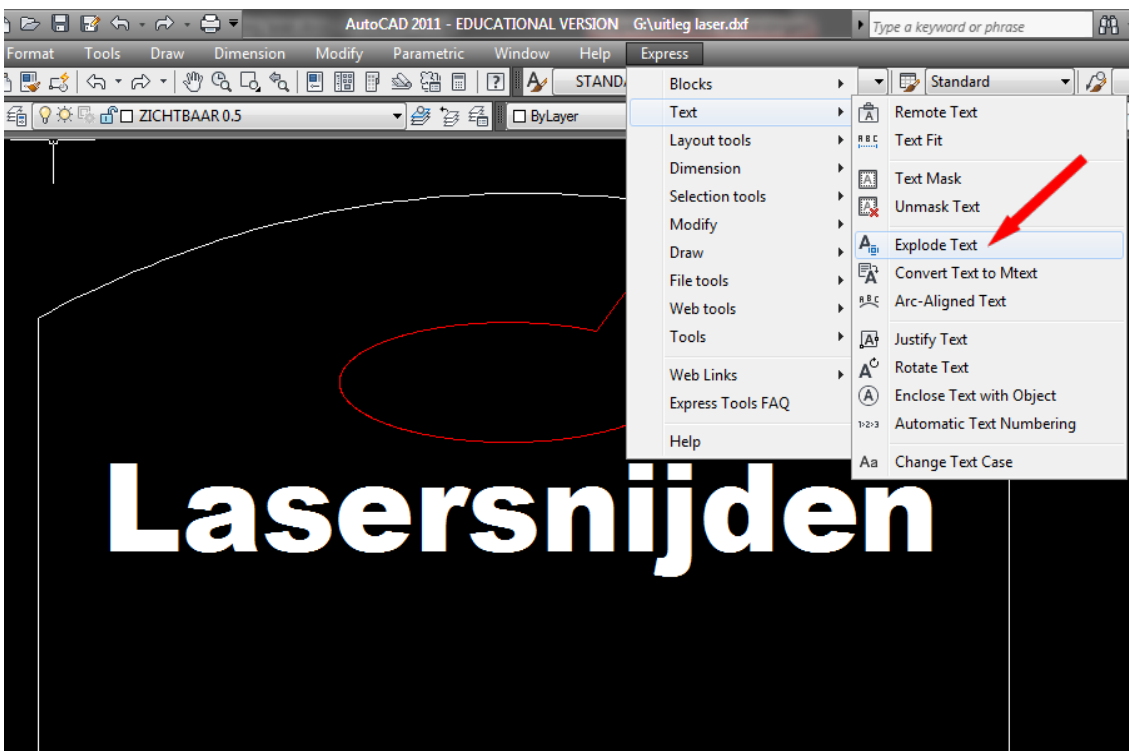
## How to make an AutoCAD drawing suitable for the laser machine.



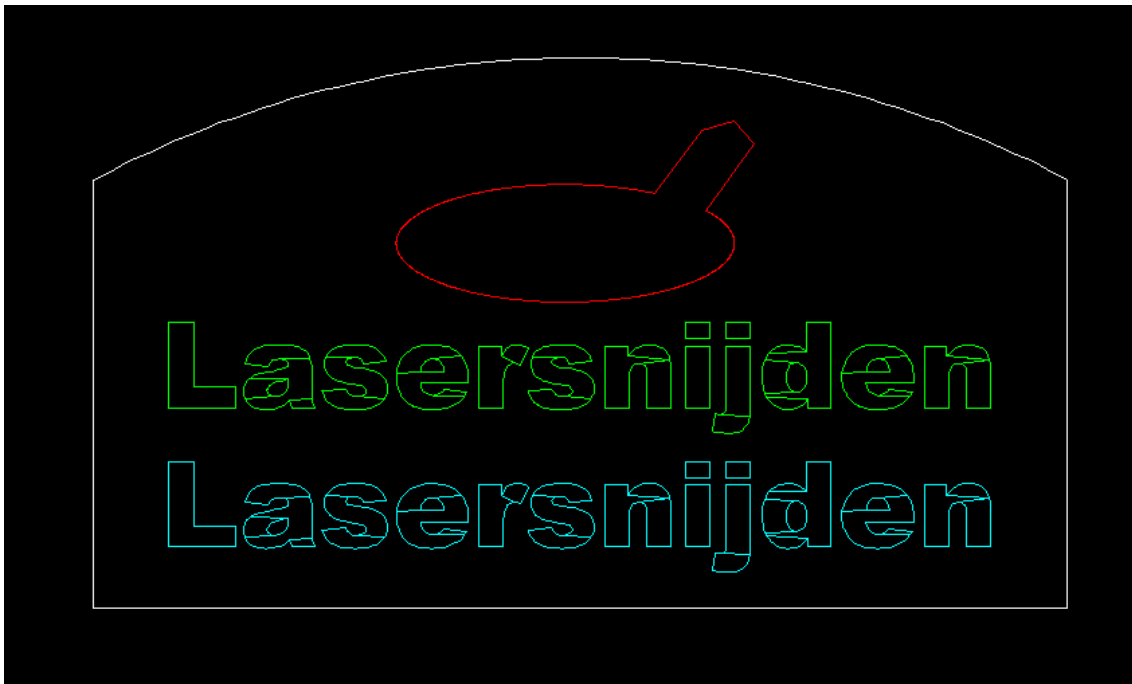
- Make a new file
- Make use of standard colors (black/white, red, green, blue)
- Do not use shading, leave faces empty



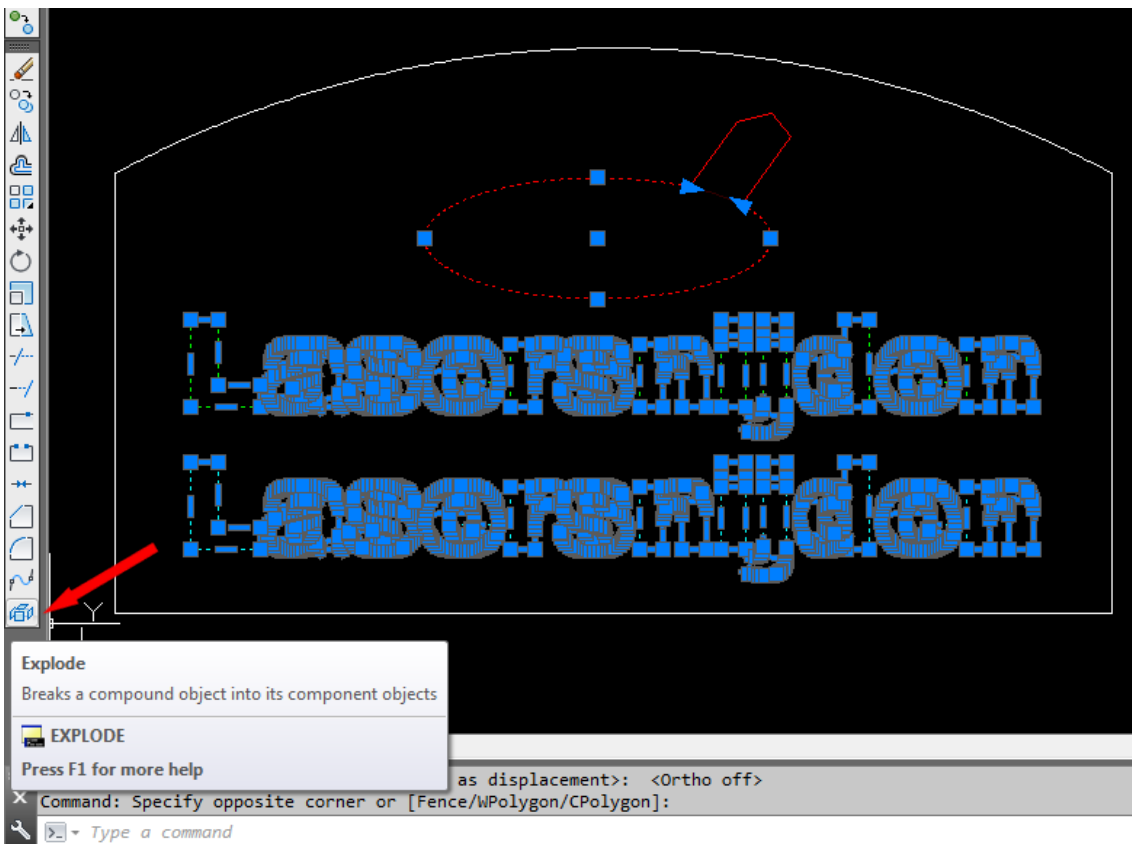
- Draw the contours of your design
- Use different colors for the lines that you want to cut and the contours that you want to engrave.
- Verify that the lines of the faces that you want to engrave are closed.



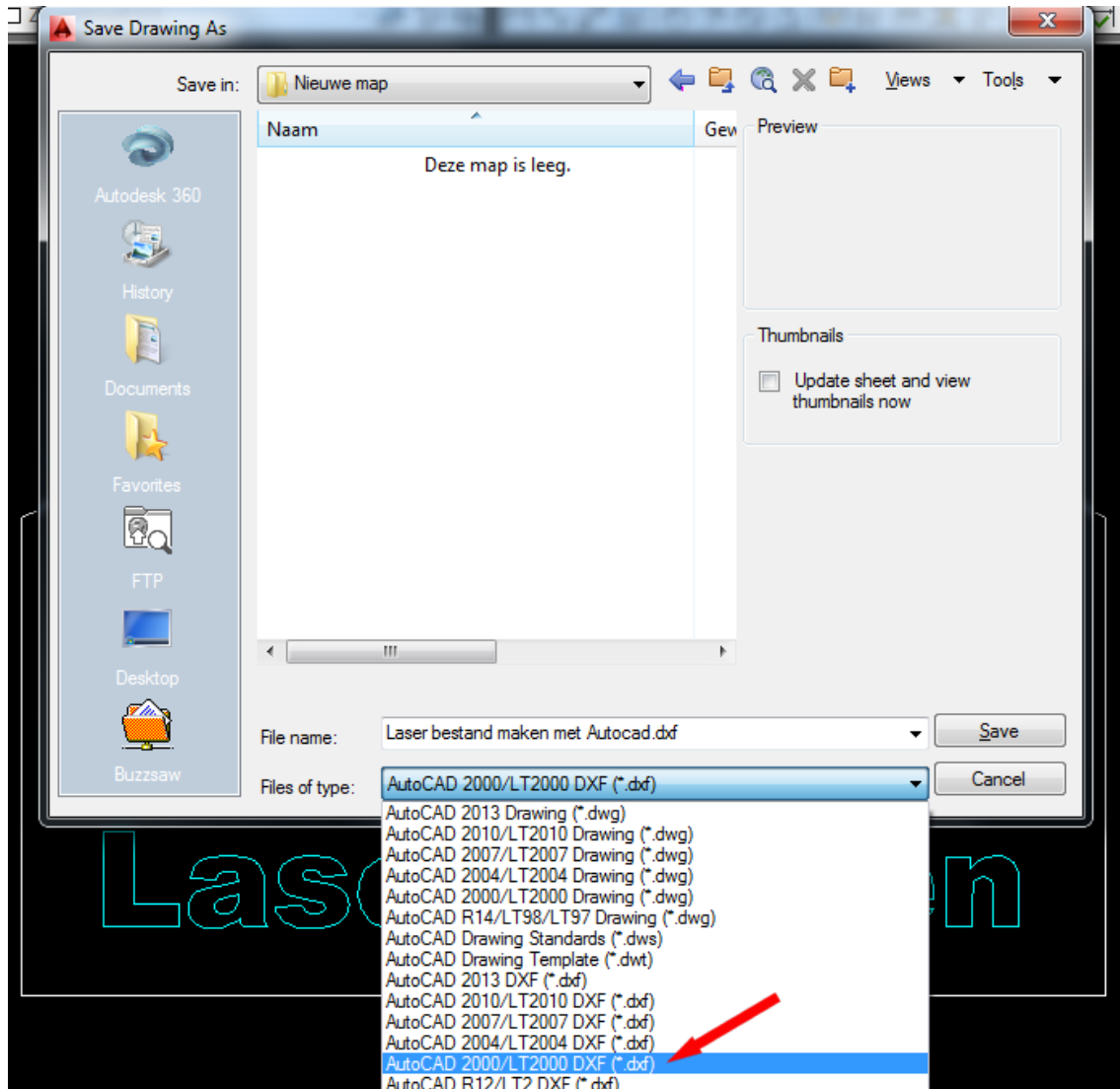
- Make use of "bold" fonts to cut or to engrave text.
- Texts must be edited in AutoCAD
- Select *text*, click on *Express*, *Text*, *Explode text*
- The editable text has now been transformed into lines.



- Lines in the letters must be deleted. Select *letters* and click on the *Explode* command.
- Then select and delete the lines. Please note, some lines are doubled.



## Saving your drawing



- Click on *File, Save as*, a *Save Drawing As* menu opens.
- Choose *Files of type: version Autocad 2000/2000LT DXF (\*.dxf)*.  
Now your drawing is ready to be imported in the laser software RDworks.



