

Reworking sustainable community development: Making the case for socially-inclusive visioning

The Craigmillar case study

Alasdair Reid, Mark Deakin, Luca Mora
Centre for Smart Cities
Institute for Sustainable Construction

U!REKA EDINBURGH 2017

Towards a Research and Education Strategy

Market-led urban regeneration

1980-1997

- Market forces dictated urban regeneration activities
- Financed by private investment
- Rationalised by 'trickle-down' economic theory
- This approach provided a very limited role for local communities in determining their future

Market-led urban regeneration

By the late 1990's the limitations of this approach were apparent in towns and cities across the UK.

It had become clear that a new approach to urban regeneration was needed to tackle deprivation and inequality. In 1997, the Urban Taskforce published 'Towards an Urban Renaissance' – a new urban vision that embraced community participation and empowerment.



Easterhouse, Glasgow



Moss Side, Manchester

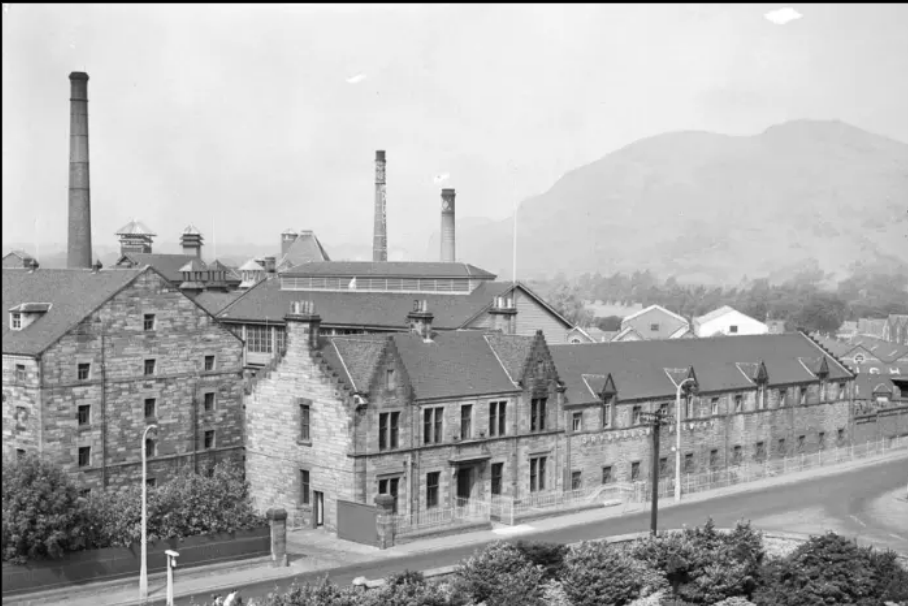
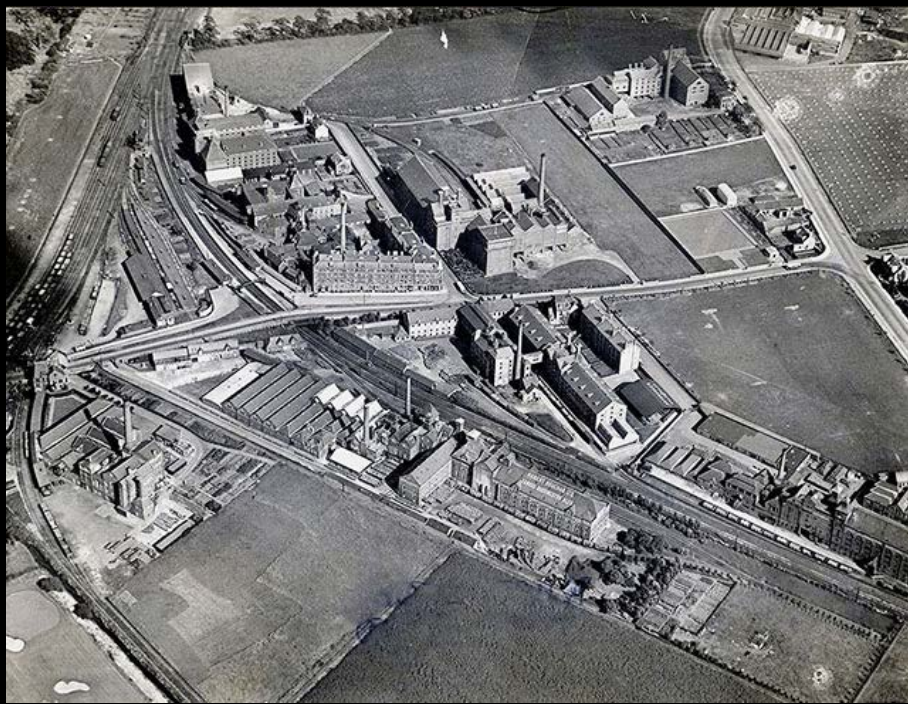
A grayscale map of Edinburgh, Scotland, showing the city's layout and surrounding areas. The map is overlaid with a white outline of the city's boundary. The text 'Edinburgh' is centered in the middle of the map. To the west, the text 'City of Edinburgh' is visible. To the east, a red oval highlights a specific area, with the text 'Craigmillar' written in red below it. In the bottom right corner, the name 'Dalkeith' is visible.

Edinburgh

City
of
Edinburgh

Craigmillar

Dalkeith



The main problems:

- High levels of unemployment
- Low economic activity
- Poor quality housing
- Overcrowding
- Poor health
- High levels of crime
- Low educational aspirations and achievement
- Anti-social behaviour
- Stigmatisation





The development strategy

The consultation exercises conducted included: public meetings, futures workshops, definitional studies, scoping exercises and agreements between the community on how to regenerate Craigmillar.

In addition, a community forum was established in order to engage local people in discussion and represent their views on the regeneration options open to them.

Greendykes South Masterplan

Community Consultation Event



You are invited to attend a pre application community consultation event about the proposed development at Greendykes South, Edinburgh. The event will give you an opportunity to meet the project team and share your views on the emerging Greendykes South masterplan.

Tuesday, 26th April 2016, 3.00pm to 7.00pm

The White House, 70 Niddrie Mains Road, Craigmillar

For more information please visit www.edigroup.co.uk/greendykes-south

Developing the Vision

Stakeholders in the community began to develop a vision for Cragmillar. Building on the community's strong sense of identity, the vision aimed to:

- Improve Craigmillar's image and reputation
- Provide diverse housing to meet the needs of key workers
- Offer new educational opportunities, with emphasis on lifelong learning
- Improve safety and security
- Ensuring the provision of green space and leisure facilities.



CCG INVITE YOU TO A COMMUNITY ENGAGEMENT EVENT AT THE WHITEHOUSE ON FRIDAY 27TH OF NOVEMBER TO SEE THE PROPOSAL FOR THE FIRST RESIDENTIAL PHASE OF CRAIGMILLAR TOWN CENTRE.

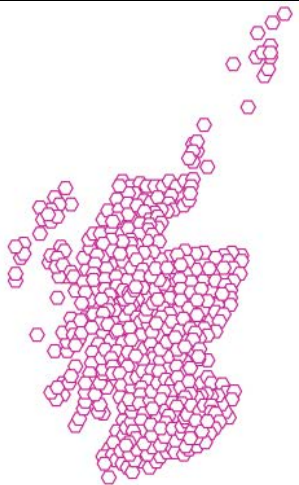
THE PLAN COMPRISES 121 HOMES, COMMUNITY PARKS AND PUBLIC REALM.

The regeneration programme:

- 3,600 new homes
- new housing management and environmental management structure
- 4 new schools
- new library / community centre
- 300,000 square feet of office and retail and leisure space
- new informal public park and formal open spaces
- new complementary leisure and sports provisions
- new public transport provisions







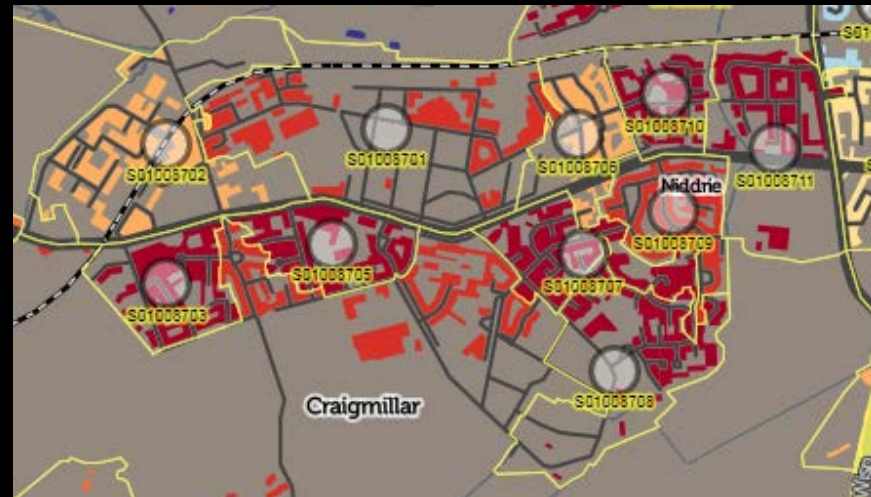
→ 5.3 million people



→ 6,976 data zones



→ 760 people per data zone



Income

Employment

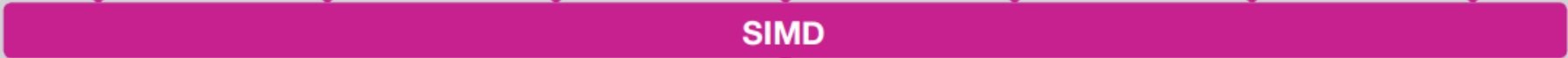
Education

Health

Access to Services

Crime

Housing



SIMD



1

the most deprived area...

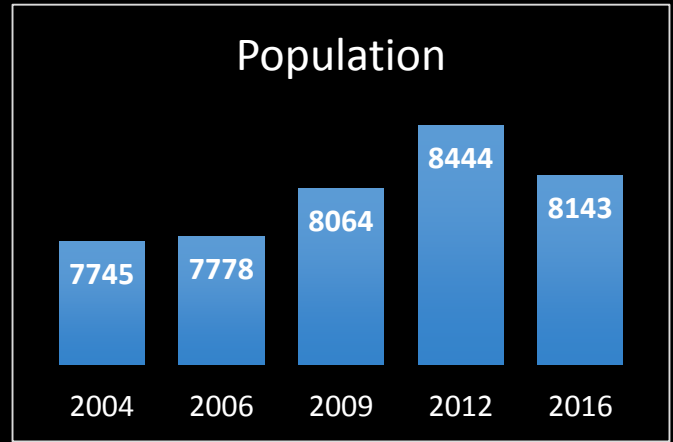
SIMD Ranks

...to 6,976

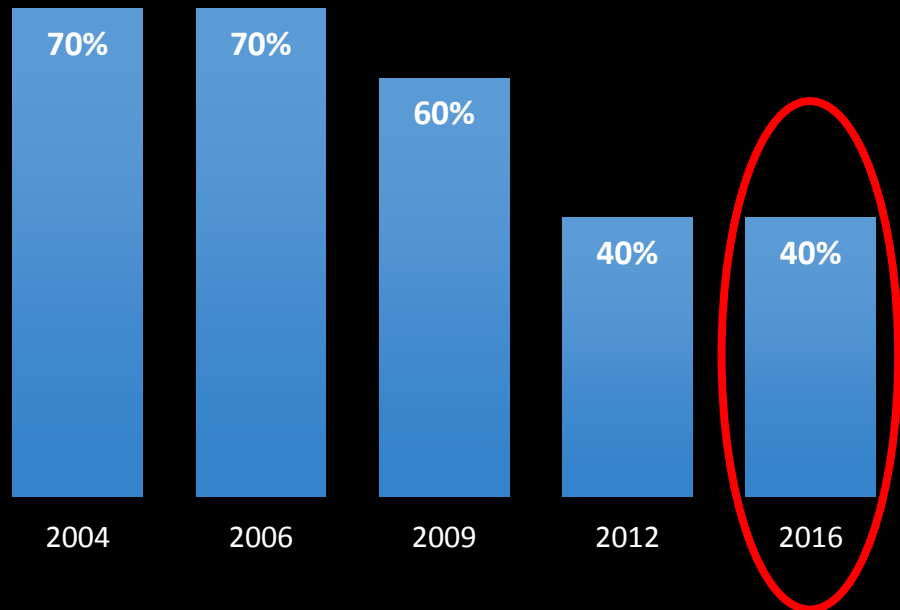
the least deprived area



Population



SIMD: Vigintile Analysis



The 2016 SIMD reveals that 40% of the data zones in Craigmillar are ranked within the 5% most deprived communities in Scotland

The community based approach

- The community-led approach requires communities to collaborate and build consensus.
- It requires strategic alliances and coalitions to form, developing the capacity for stakeholders to participate in and lead the urban regeneration process.
- It requires the community to develop a shared vision of the regenerated urban environment.

Thank you.

Please contact the Centre for Smart Cities:

Alasdair Reid al.reid@napier.ac.uk

Mark Deakin m.Deakin@napier.ac.uk

Luca Mora l.mora@napier.ac.uk