



# SIMHE – Supporting Immigrants in Higher Education in Finland

Heidi Stenberg SIMHE-Metropolia, project director





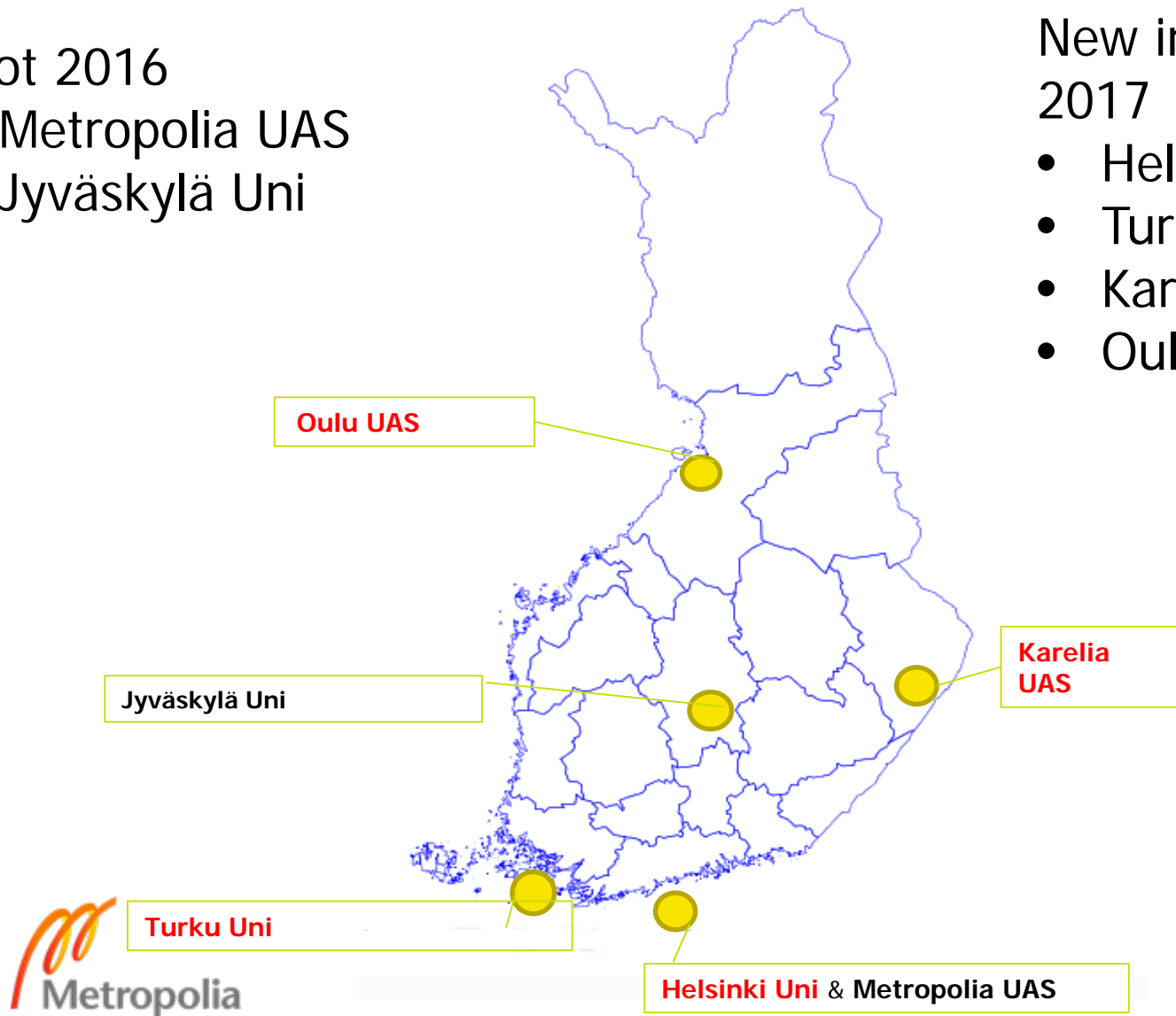
# SIMHE institutions

## Pilot 2016

- Metropolia UAS
- Jyväskylä Uni

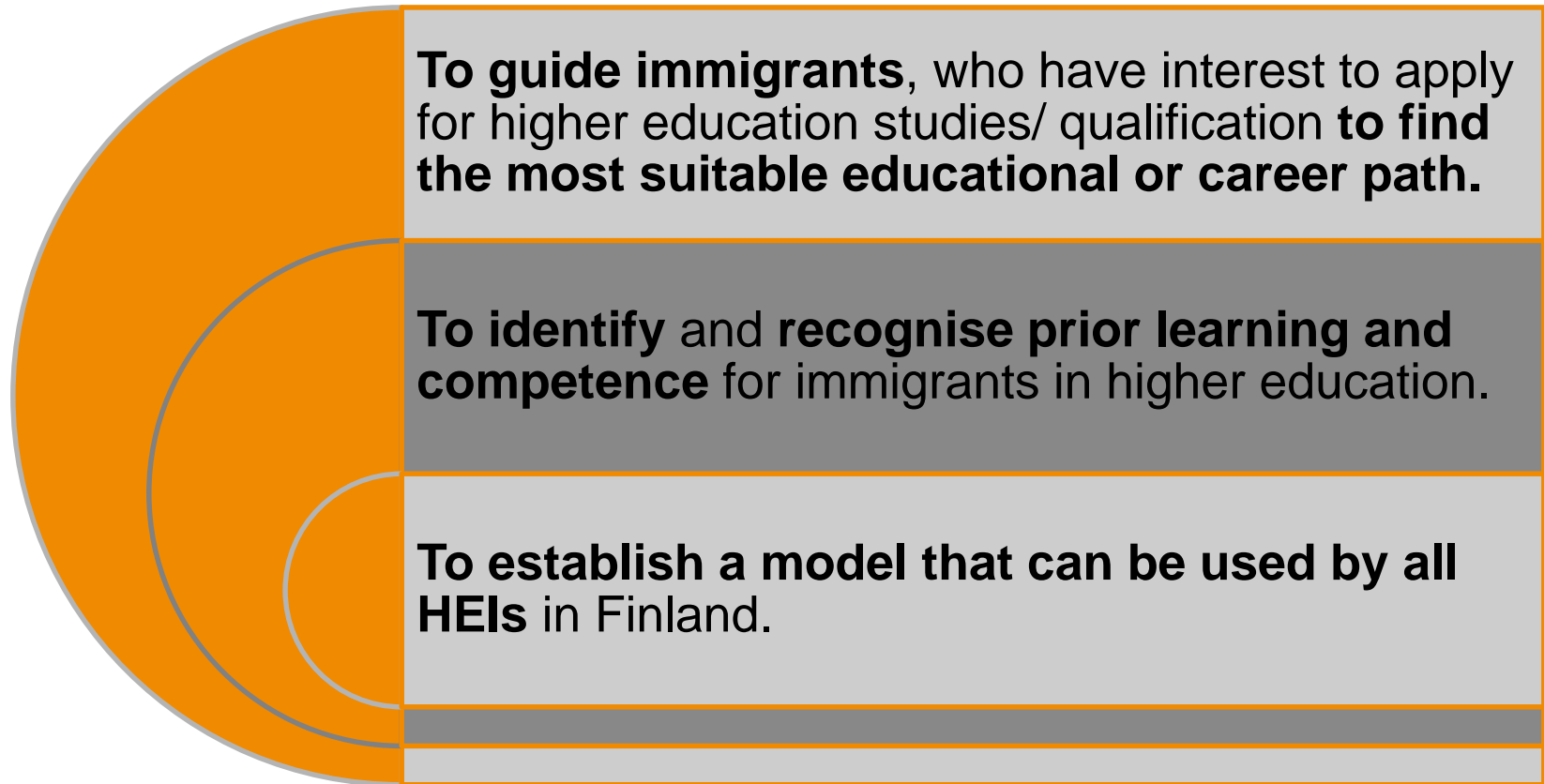
## New institutions 2017

- Helsinki Uni
- Turku Uni
- Karelia UAS
- Oulu UAS





# Objectives



**To guide immigrants**, who have interest to apply for higher education studies/ qualification **to find the most suitable educational or career path.**

**To identify and recognise prior learning and competence** for immigrants in higher education.

**To establish a model that can be used by all HEIs** in Finland.

# SIMHE – Metropolia

- Guidance and Councelling
  - Regonition of competences
- ❖ *Unique life stories*
  - ❖ *All kind of immigrants not only refugees*
  - ❖ *Language is not the problem*
  - ❖ *Giving time, attention and respect*
  - ❖ *Aiming at a good future in Finland*



**4/2016- 9/2017**

- 717 participants
- 33 nationalities

# SIMHE – Metropolia

## Recognition of Competences

Completed degree  
Residence permit in Finland

## Guidance and Counselling

Eligibility for higher education,  
studies or degree in higher education

## Mapping of Competences

Self-Evaluation



In-Depth  
Professional  
Discussion

Personal  
Guidance

Group  
Guidance

## Education possibilities

Preparation courses for  
entrance examination

Open university studies >  
< supplementary studies

Bachelor's or Master's Degree



# Recognition of Competences

”International talents need local references and networks”

## The aim

- In the first pilot was to find right target group of the service
- To develop services for recognition of competences
- To recognise the relevant educational and career paths
- To promote customers’ opportunities to supplement their competences, enhance their employment and networks

**4/2016- 9/2017**

- 133 participants (business and engineering field)
- 20 nationalities



## Results

- Immigrants can describe their competences better in the Finnish context
- Find the specific need for supplementary education for Finnish working life
- SIMHE’s reference document enables employers understand immigrants’ competences

## SIMHE Match

Recruiting and matching events  
Company contact list’s, etc.



KIITOS!

[Simhe-info@metropolia.fi](mailto:Simhe-info@metropolia.fi) ; [heidi.stenberg@metropolia.fi](mailto:heidi.stenberg@metropolia.fi)

<http://www.metropolia.fi/en/about-us/simhe/>

<http://www.metropolia.fi/en/services/for-immigrants/>

<http://www.metropolia.fi/en/academics/courses-for-immigrants/>

