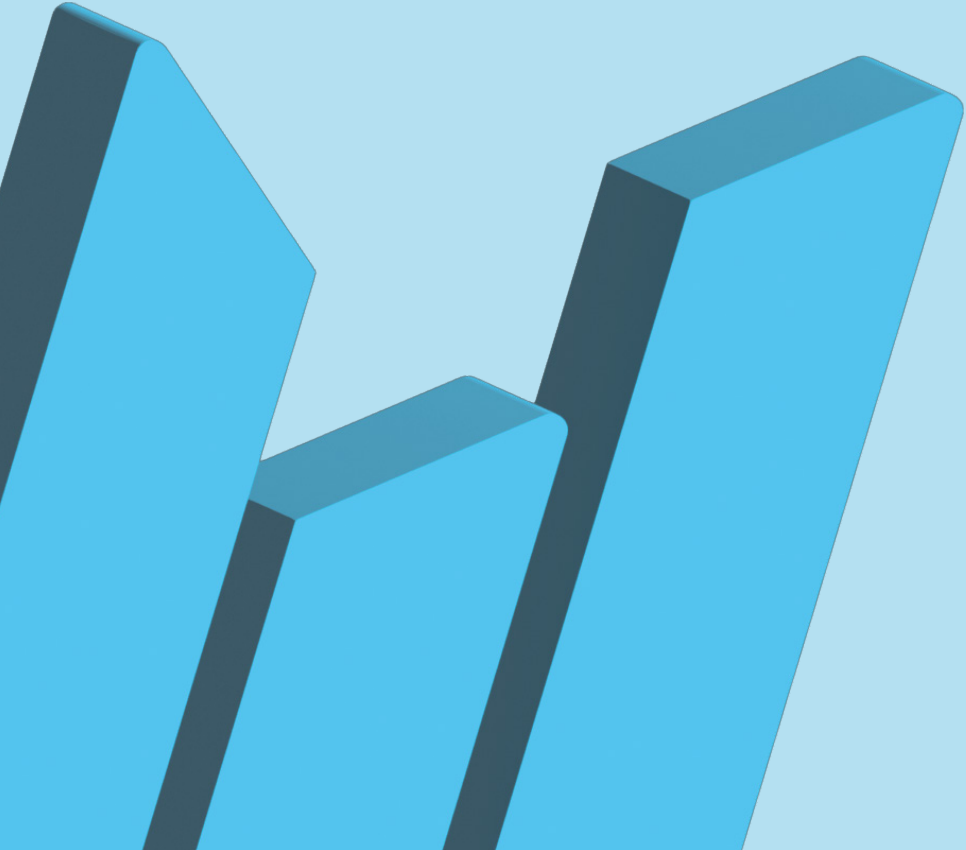


Want to know more about **mobility opportunities** for students & staff within the U!REKA network?

For more information, look at the back of this flyer.



## About UIREKA

UIREKA's impact stretches across the four regions of the European Higher Education Area, covering approximately 11.4 million European citizens. UIREKA has a total student body of approximately 150,000 students, and the combined number of staff is about 13,000. Since its establishment, UIREKA has successfully established joint education in the form of **blended intensive programmes**, a **lecture series**, **Change Agents programme** and supported blended, virtual and physical mobility of its staff and students. We have initiated joint European RDI projects such as ongoing Erasmus+ projects **SusTexEdu** (Education Partnership of Textile and Clothing Sector Materials & Sustainability) and **ICI** (Inclusive Comprehensive Internationalisation).

## UIREKA partners:

- Amsterdam University of Applied Sciences (Netherlands)
- Edinburgh Napier University (United Kingdom)
- HOGENT University of Applied Sciences and Arts (Belgium)
- Frankfurt University of Applied Sciences (Germany)
- Metropolia University of Applied Sciences (Finland)
- VSB – Technical University of Ostrava (Czech Republic)
- Politécnico de Lisboa (Portugal)

**Do you want to know more about the mobility opportunities for students within the UIREKA network? Have a look at the following links:**

- [Amsterdam University of Applied Sciences](#)
- [Edinburgh Napier University](#)
- [HOGENT University of Applied Sciences and Arts](#)
- [Frankfurt University of Applied Sciences](#)
- [Metropolia University of Applied Sciences](#)
- [VSB – Technical University of Ostrava](#)
- [Politécnico de Lisboa](#)

**For students:** if you are interested in a mobility opportunity, please contact the international office of your home institution/department. **For staff:** if you want to know more about mobility opportunities for staff within the UIREKA network, please contact the **member of the Mobility Working** group of your institution.